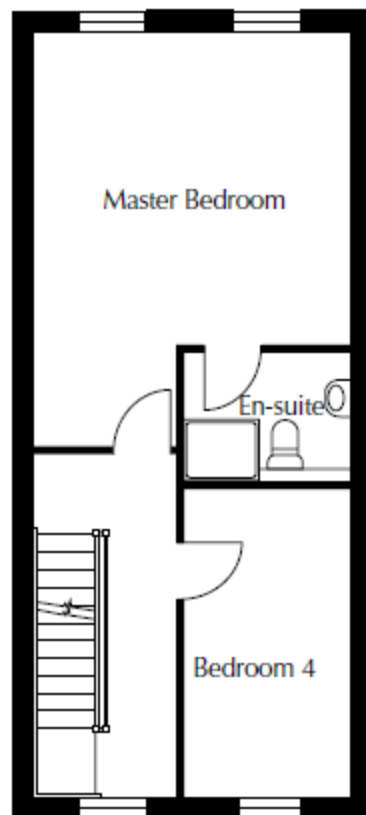


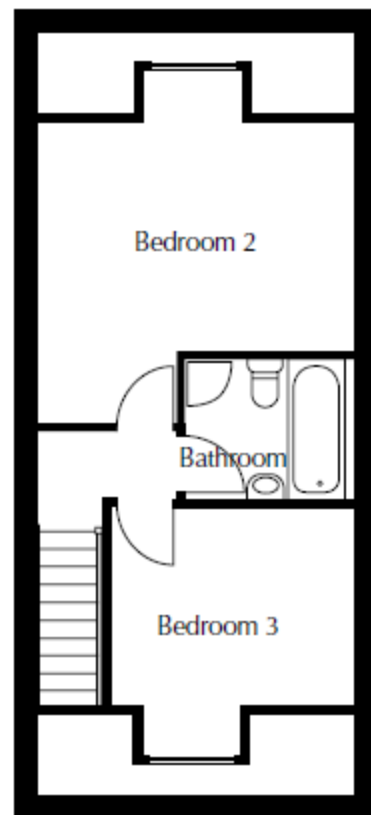
## GROUND FLOOR

Kitchen	2166 x 3288
Lounge / Dining	4204 x 5466
WC	1100 x 2166
Store	750 x 2000



## FIRST FLOOR

Master Bedroom	4103 x 4204
En-suite	1700 x 2237
Bedroom 4	2237 x 4051



## SECOND FLOOR

Bedroom 2	2975 x 4204
Bathroom	1850 x 2093
Bedroom 3	2833 x 3221

7'1" x 10'9"
13'10" x 17'11"
3'7" x 7'1"
2'6" x 6'7"

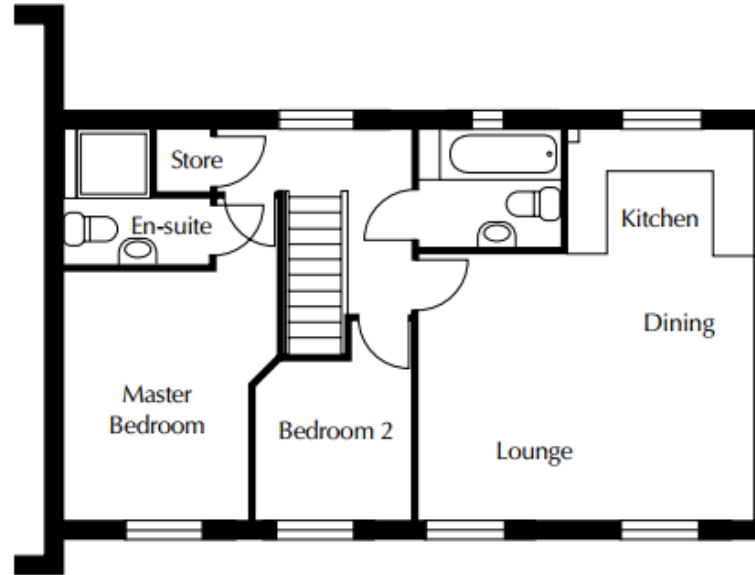
13'6" x 13'10"
5'7" x 7'4"
7'4" x 13'3"

Brierscroft

BRIERLEY

The  
Cottage

Plots 5 & 18  
A spacious 2 bedroom apartment



FIRST FLOOR

Lounge / Dining	3936 x 4991	16'4" x 12'11"
Kitchen	1843 x 2767	6'1" x 9'1"
Bathroom	1743 x 2124	5'9" x 7'0"
En-suite	1000 x 2092	3'3" x 6'10"
Master Bedroom	2703 x 3691	8'10" x 12'1"
Bedroom 2	1897 x 2347	6'3" x 7'8"

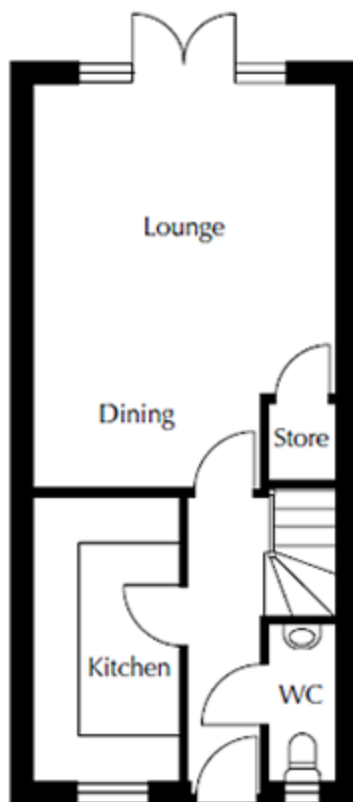
📞 01226 763160

✉ brierscroft@kmregroup.co.uk

🌐 www.brierscroft.co.uk

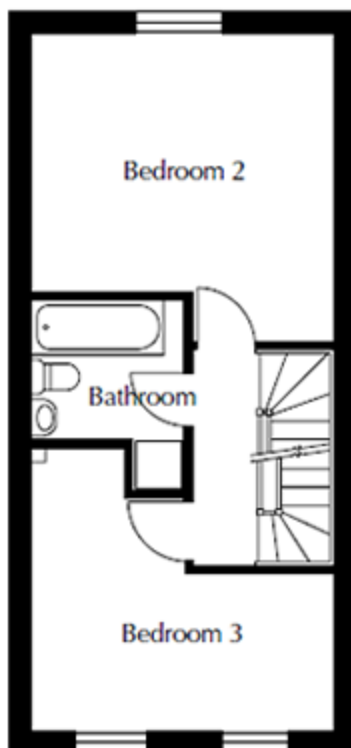
The floor plans depict a typical layout of this house type. For exact plot specification, details of external and internal finishes, dimensions and floor plan differences, please speak to our Sales Executive for more information.





## GROUND FLOOR

Kitchen	1913 x 3745	6'3" x 12'3"
Lounge / Dining	5309 x 3964	13'0" x 17'5"
WC	900 x 2045	3'0" x 6'9"



## FIRST FLOOR

Bedroom 2	3294 x 3964	10'10" x 13'0"
Bedroom 3	3058 x 3964	10'0" x 13'0"
Bathroom	1960 x 2013	6'5" x 6'7"



## SECOND FLOOR

Master Bedroom	2985 x 4713	9'9" x 15'6"
En-suite	1816 x 1956	6'5" x 5'11"